

About JIBC

Japan IT Business College is a vocational school opened in 2018 and approved by Okayama Prefecture that has two specialized courses and two departments in the fields of commercial practice, education, and social welfare. With the development of AI, it is necessary to develop highly-skilled human resources. The Japanese market is shrinking and the global market with a population of over 7 billion people continues to expand. 150 years have passed since the Meiji Restoration, and in the midst of dynamic changes, we support students regardless of nationality or age. Let's learn about regional revitalization while experiencing international exchange as a team.

Setouchi Life!

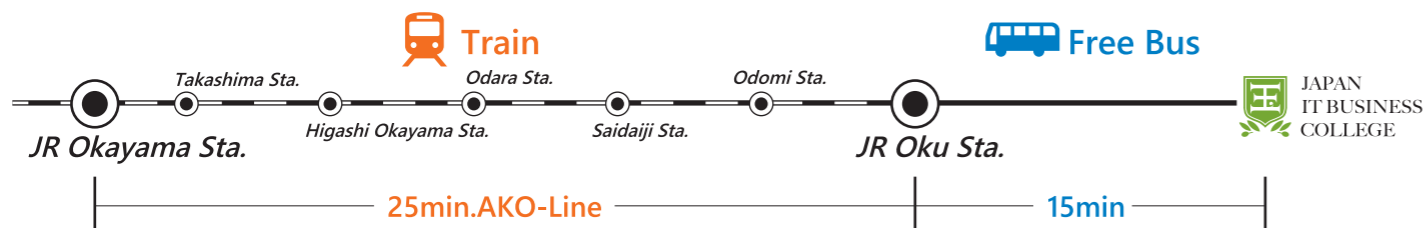


JAPAN IT BUSINESS COLLEGE

Okayama



JAPAN IT BUSINESS COLLEGE



■Address/ Okayama-ken Setouchi-shi Oku-cho Shirimi 2968 ■Phone Number/+81(0)869-24-8588
 ■E-Mail/info@setouchicollege.com ■Website/http://setouchicollege.com

< SCHOOL INFORMATION >



DEPARTMENT OF
INTERNATIONAL BUSINESS
 DEPARTMENT OF
CAREGIVING & WELFARE



Let's Study IT in Setouchi

IT/Caregiving
 ×
 Blockchain
 ||
 Regional Revitalization

JAPAN

IT BUSINESS COLLEGE



学校法人 せとうち
日本ITビジネスカレッジ

Study Information Technology abroad in Setouchi

In order to get a job in Japan or in your home country, you will learn important IT skills such as APP Development, System Development, and Web Design in the IT courses of the Department of International Business. The Foreign Language Course of the Department of International Business offers practical lessons to improve your English skills necessary to work in hotels, the tourism industry, and global companies. In the Department of Caregiving & Welfare, our goal is to pass the National Exam for Care Worker Certification. Students can learn business Japanese through all of our lessons. After graduation, students of the Department of International Business will be able to find jobs such as IT engineering, interpreting, and hotel / ryokan front desk clerk. Students in the Department of Caregiving & Welfare will be able to find jobs at nursing care facilities.

Point 1

Acquire the skills needed to land in-demand jobs for the future. Our staff will also provide guidance and support for your career goals.

Our well-prepared curriculum teaches essential knowledge and skills to help you enter industries that have rapidly developed during the Covid-19 Era, such as IT, caregiving, and much more. Learn about blockchain technology and website development technology and get a job in the IT industry. Improve your languages skills (e.g. English and Japanese) and become a corporate interpreter. Work in Japan as a caregiver, a profession that is unlikely to be replaced by AI and machines. Find the right job from the many choices offered by our group's HR companies.



Point 2

Here you'll find a dynamic learning environment, safe from natural disasters and surrounded by nature!

Okayama prefecture has one of the lowest risks of disasters in all of Japan. Okayama is a comfortable place to live in and has earned a reputation in recent years as a destination for immigrants. Enjoy the local delicious fruits, such as white peaches and grapes throughout the year. And relieve daily stress with many attractive hot springs.



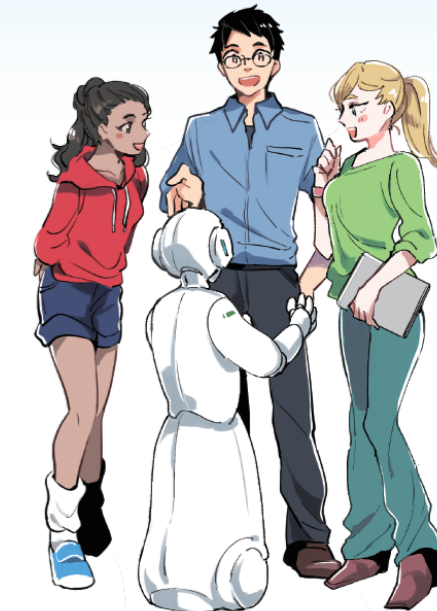
Let's find the jobs that will remain in the future



Point 3

Work internationally with your specialized skills and diploma.

You will receive your diploma after graduating. In addition, you can apply for a working visa by getting a job as an IT engineer, interpreter, certified care worker, etc. We were the first to introduce online interactive lessons in the area. Students who attend online classes from home can communicate and interact with students in class in real time.



Curriculum

Year	1st Year	2nd Year	Career after Graduation	Career Support
Academic Programs	<ul style="list-style-type: none"> ●Department of International Business Fundamentals of IT / Fundamentals of Web Design / Blockchain / English Communication / TOEIC Preparation ●Department of Caregiving & Welfare Learn the basics of caregiving from experienced instructors. Learn all the required skills in the caregiving industry. 	<ul style="list-style-type: none"> ●Department of International Business Engage in practical development of Web system through internship. Achieve high score in TOEIC test, improve your chances of finding work. ●Department of Caregiving & Welfare Practical experiences at nursing facilities. Preparation for the National Exam. Become the caregiver specialized in IT 	Department of International Business IT Courses IT Engineering Trading Business ● Programming ● Network Engineering ● Web Design ● Trading Company Staff Foreign Languages Courses Hotel / Ryokan ● Hotel Front Desk (Inbound) ● International Communicator ● Interpreter/Translator Can Get Working Visa! Department of Caregiving & Welfare ● Certified Care Worker	Our group provides Full Career Support Bridge of South East Asia Co., Ltd ● Part-time Jobs ● Internship Programs ● Job-hunting Support ● Provides Nursing Facilities Information Japan IT System Co., Ltd ● IT Part-time Jobs ● Internship Programs ● Employment after Graduation
Department of International Business	Introduction to Web System, HTML, CSS, JavaScript I, Java·Swift I, Fundamental of PHP, Entrepreneurship I, Marketing I, Career Design I, Foreign Languages I, Fundamental of Web Design, Microsoft Word / Excel, Business Manner I, International Communication I, Practical Training I, Computer Exercises I, Business Lecture·Internal Documents I, Web Programming I, Languages Communication I	Introduction to Business IT / Engineer Skills, Introduction to Internet Security, JavaScript II, Java·Swift II, PHP Application, Entrepreneurship II, Marketing II, Current Affairs, Career Design II, Foreign Languages II, Business Manner II, International Communication II, Job-hunting, Internship, Practical Training II, Computer Exercises II, Business Lecture·Internal Documents II, Web Programming II, Languages Communication II		
Department of Caregiving & Welfare	Human Dignity and Independence, Social Living and Social Security System, Relationship and Communication, Welfare / Caregiving System, Information Processing in Caregiving (IT), Fundamental of Caregiving I/II, Communication Methods I/II, Daily Life Support Methods I-V, Caregiving Exercises I, Process of Caregiving I, Basis Practices I/II, The Structure of Mind and Body I-III, Understanding of Development and Aging I/II	Psychology, Volunteer Activities, Information Processing in Caregiving (IT), Fundamental of Caregiving III-VI, Communication Methods II, Daily Life Support Methods VI/VII, Process of Caregiving II, Caregiving Exercises II-IV, Basis Practices III-VI, Understanding of Dementia I/II, Medical Care I/II		

Targeted Certificate

Department of International Business / IT Course

- Information Technology Passport Examination (national certificate)
- Fundamental Information Technology Engineer Examination (national certificate)

Department of International Business / Foreign Languages Course

- JLPT N2/N1 ● TOEIC score of 700 points and above
- Chinese Proficiency Test level 4 and above ● National Government Licensed Guide Interpreter

Department of Caregiving & Welfare

- Certified care worker



Scholarship programs

- ① Open Campus Participation / 50,000 JPY
- ② Recommendation from Japanese language school / 100,000 JPY
- ③ Certificate of Japanese Proficiency / 150,000 JPY - 250,000 JPY
- ④ Department of Caregiving & Welfare
- Nursing Facilities Scholarship / 1,200,000 JPY- 1,910,000 JPY
- Council of Social Welfare Scholarship / 1,680,000 JPY

Application Guidelines

Available Department

Department Names	Day·Night	Working Period
Department of International Business / Foreign Languages Course	Day	2 years
Department of Caregiving & Welfare	Day	2 years

Application Eligibility

Applicants must fulfill the following requirements

- ① Have completed at least 6 months of study at a Japanese language education institution approved by the Ministry of Justice
(the cumulative total attendance and the attendance rate of each semester at the Japanese language education institution must be at least 90%)
- ② Have passed N1 or N2 level of The Japanese-Language Proficiency Test (JLPT) offered by the Japan Foundation and Japan Educational Exchanges and Services.
- ③ Have completed at least one year of study at a Japanese junior high school, high school, junior college, university, or graduate school.

Application Process

Documents Screening /
Written exam (essay) /
Interview

Interview Date

※Refer to Application Guidelines

Application Period

Monday - Friday
9:00~16:00



Part-time jobs, etc.,

You can do part-time jobs using the IT skills and caregiving skills you learn in class. You can achieve a lot by making good use of techniques such as coding and programming. We can also introduce you to part-time job opportunities at convenience stores, supermarkets, hotels, etc.



Timetable (example)

Make friends with Japanese students and build relationships with Japanese businesses. Our school curriculum includes local cultural exchange activities and opportunities to visit companies at least once a month; thus students can expand their connections for future employment in Japan.

Department of International Business	Time	Monday	Tuesday	Wednesday	Thursday	Friday
	9:00 ~10:30	MS Office	Business Skills	Business English	Introduction to Web Systems	Japanese
10:40 ~12:10	Fundamentals of IT 1 (IT Passport)	HUAWEI ICT Academy	TOEIC Preparation	Javascript 1	Kanji Practice	
12:55 ~14:25	Fundamentals of IT 2 (Hardware)	Web Design	Database Fundamentals			
14:35 ~16:05			Job-hunting Preparation			

Department of Caregiving & Welfare	Time	Monday	Tuesday	Wednesday	Thursday	Friday
	9:00 ~10:30	MS Office	Caregiving Practical Training	Daily Life Support Methods I	Fundamentals of Caregiving I	Japanese Cultural Understanding
10:40 ~12:10	Process of Caregiving I	Caregiving Practical Training	Daily Life Support Methods I	Fundamentals of Caregiving I	Japanese Language in Caregiving	
12:55 ~14:25	The Structure of Mind and Body I	Caregiving Practical Training	Human Dignity and Independence	Caregiving Exercises I		
14:35 ~16:05	Understanding of Dementia I	Caregiving Practical Training	Social Living and Social Security System	Understanding Disorders I		

Classes are mainly in the morning, so students can have free time to do part-time jobs and relax in the afternoon.

